

**Stealth Products**



**USER MANUAL**

i-Drive Accessory



## i-Click

---

Stealth's User Manual and Maintenance Guide  
for the i-Drive 4.0 Mouse Emulation

Stealth Products strives for 100% customer satisfaction. Your complete satisfaction is important. Please contact us with feedback or suggested changes that will help improve the quality and usability of our products. You may reach us at:

Stealth Products, LLC  
104 John Kelly Drive, Burnet, TX 78611  
Phone: (512) 715-9995      Toll Free: 1(800) 965-9229  
Fax: (512) 715-9954      Toll Free: 1(800) 806-1225  
info@stealthproducts.com      www.stealthproducts.com

## General

Read and understand all instructions prior to the use of the product. Failure to adhere to instructions and warnings in this document may result in property damage, injury, or death. Product misuse due to failure of the following instructions will void the warranty.

Immediately discontinue use if any function is compromised, parts are missing, loose, or shows signs of excessive wear. Consult with your supplier for repair, adjustment, or replacement.

## Important Information!

All persons responsible for fitting, adjustment, and daily use of the devices discussed in these instructions must be familiar with and understand all safety aspects of the devices mentioned. In order for our products to be used successfully, you must:

- Read and understand all instructions and warnings.
- Maintain our products according to our instructions on care and maintenance.
- Devices should be installed and adjusted by a trained technician.

## Supplier Reference

Supplier: \_\_\_\_\_

Telephone: \_\_\_\_\_

Address: \_\_\_\_\_

\_\_\_\_\_

Purchase Date: \_\_\_\_\_

Model: \_\_\_\_\_

The installation instructions will guide you through the options and possibilities with the product.

Instructions are written with the expressed intent of use with standard configurations. They also contain important safety and maintenance information, as well as describe possible problems that can arise during use. For further assistance, or more advanced applications, please contact your supplier or Stealth Products at (512) 715-9995 or toll free at 1-800-965-9229.

Always keep the operating instructions in a safe place so they may be referenced as necessary.

All information, pictures, illustrations, and specifications are based on the product information that was available at the time of printing. Pictures and illustrations shown in these instructions are representative examples and are not intended to be exact depictions of the various parts of the product.

### **CAUTION**

These products are designed to be fitted, applied, and installed exclusively by a health care professional trained for these purposes. The fitting, application and installation by a non-qualified individual could result in serious injury.

## Ordering Documentation

You can download additional copies of this user manual on the Stealth website: [www.stealthproducts.com](http://www.stealthproducts.com)

Or search:

i-Drive Mouse Emulation User's Manual in the search bar at the top of the page.

Our products are designed, manufactured, and produced to the highest of standards. If any defect in material or workmanship is found, Stealth Products will repair or replace the product at our discretion. Any implied warranty, including the implied warranties of merchantability and fitness for a particular purpose, shall not extend beyond the duration of this warranty. Stealth Products, LLC does not warrant damage due to, but not limited to:

- Misuse, abuse, or misapplication of products.
- Modification of product without written approval from Stealth Products, LLC.
- Any alteration or lack of serial number, where applicable, will automatically void this warranty.
- Stealth Products, LLC is liable for replacement parts only.
- Stealth Products, LLC is not liable for any incurred labor costs.

No person is authorized to alter, extend, or waive the warranties of Stealth Products, LLC.

Stealth Products warrants against failure due to defective materials or workmanship:

Covers: 180 days

Hardware: 5 years

Electronics: 3 years

## **In Case of Product Failure**

In the event of product failure covered by our warranty, please follow the procedures outlined below:

1. Call Stealth Products at +1 (512) 715-9995 or toll free at +1 (800) 965-9229.
2. Request the Returns Department or obtain a Return Authorization (RA) from the Returns Department and follow department documentation instructions.

<b>1.0 Customer Satisfaction .....</b>	<b>i</b>
<b>2.0 Important Information.....</b>	<b>ii</b>
<b>3.0 Introduction .....</b>	<b>iii</b>
<b>4.0 Warranty .....</b>	<b>iv</b>
<b>5.0 Table of Contents.....</b>	<b>v</b>
<b>6.0 Warning Labels.....</b>	<b>vii</b>
6.1 Warning Labels .....	vii
6.2 Limited Liability.....	vii
6.3 Testing .....	vii
<b>7.0 Design and Function.....</b>	<b>1</b>
7.1 Intended Use.....	1
7.2 Software License.....	1
<b>8.0 i-Drive Configuration .....</b>	<b>2</b>
8.1 i-Drive Mobile.....	2
<b>9.0 Software Setup.....</b>	<b>5</b>
9.1 Bluetooth Preparations .....	5
Windows.....	5
Mac Setup.....	7
<b>10.0 Software Installation .....</b>	<b>8</b>
10.1 Software Installation .....	8
Windows.....	8
Windows Usage and Registration .....	9
Mac.....	10
Mac Usage and Registration .....	10

<b>11.0 Mouse Emulation .....</b>	<b>12</b>
11.1 Using Mouse Emulation .....	12
Before Use .....	12
To Use .....	12
11.2 Optional Settings .....	12
Windows .....	12
Mac .....	13
<b>12.0 First Time Use .....</b>	<b>14</b>
12.1 First Time Use .....	14
12.2 User Testing .....	14
12.3 Conditions of Use .....	14
<b>13.0 Maintenance .....</b>	<b>15</b>
13.1 Care and Maintenance .....	15
13.2 Safety .....	15
13.3 Technical Data .....	15

## Warning Labels

### 6.1

Warnings are included for the safety of the user, client, operator and property. Please read and understand what the signal words **SAFETY, NOTICE, CAUTION, WARNING** and **DANGER** mean, how they could affect the user, those around the user, and property.

#### **DANGER**

Identifies an **imminent** situation which (if not avoided) will result in **severe injury, death, and property damage**.

#### **WARNING**

Identifies an **potential** situation which (if not avoided) will result in **severe injury, death, and property damage**.

#### **CAUTION**

Identifies an **potential** situation which (if not avoided) will result in **minor to moderate injury, and property damage**.

#### **NOTICE**

Identifies important information not related to injury, but possible **property damage**.

#### **SAFETY**

Indicates steps or instructions for safe practices, reminders of safe procedures, or important safety equipment that may be necessary.

## Limited Liability

### 6.2

Stealth Products, LLC accepts no liability for personal injury or damage to property that may arise from the failure of the user or other persons to follow the recommendations, warnings, and instructions in this manual.

Stealth Products does not hold responsibility for final integration of final assembly of product to end user. Stealth Products is not liable for user death or injury.

## Testing

### 6.3

Initial setup and driving should be done in an open area free of obstacles until the user is fully capable of driving safely.



## Intended Use

### 7.1

i-Click connects your Bluetooth® enabled i-Drive 4.0 to your PC or Mac, transforming your alternative drive control into a fully functioning mouse device. Full screen navigation, left, right, and double click functions, and fine speed controls work seamlessly together to give you complete control of your computer. The software is intuitive and easy to use, and tucks away in the system tray to provide a transparent user experience. Once properly configured and paired, i-Click easily connects and disconnects from the i-Drive® control system, allowing you to transition from chair control to computer control and back. The system requires at least three input devices and includes an easy to use function map for quick start up.

## Features

### 7.2

The software is licensed to a specific i-Drive® hardware serial number, but can be installed on an unlimited number of devices and platforms.

Be sure to have your i-Drive® serial number handy when placing your order.

The i-Drive Mouse Emulation™ software can be purchased at the following webpage:

[www.tridentresearchstore.com/idrive-mobility-products](http://www.tridentresearchstore.com/idrive-mobility-products)

## i-Drive Mobile

## 8.1

i-Click is designed to function without any configuration changes to the i-Drive. This section will show how to make changes, should they be necessary.

These changes can only be made by someone who has been authorized to use the i-Drive programming application.

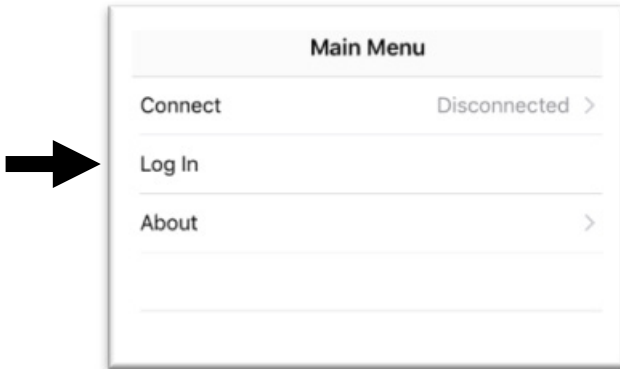
**Step 1:** Ensure your phone or wireless device has the *Bluetooth* option turned on.

**Step 2:** Power up your i-Drive.

**Step 3:** Launch the “i-Drive Mobile” application.

A) For i-Drive Mobile app installation instructions, see the i-Drive 4.0 User Manual.

**Step 4:** Select “*Log In*” and enter the User Name and Password assigned to you. You will see a message of “*Validation Successful*” when logged in.

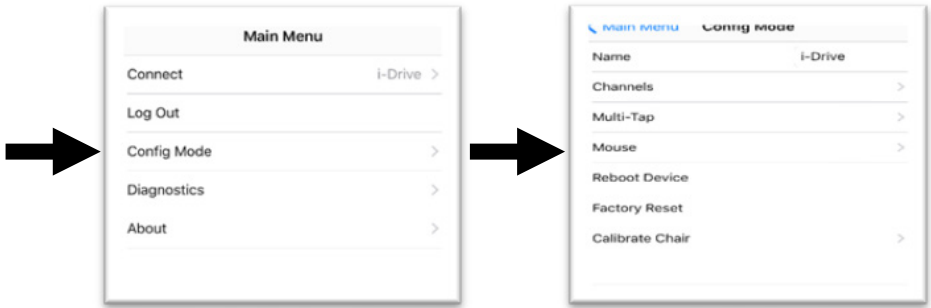


**Step 5:** Select “*Connect*”.

**Step 6:** Click on the appropriate i-Drive and a window will appear asking you to enter the PIN. This is the serial number on the Stealth Products sticker on the i-Drive case.

**Step 7:** When you have successfully logged in and the App has located the i-Drive device, new options will appear in the Main Menu: *Config Mode*, *Diagnostics*, and *About*.

**Step 8:** Enter “Config Mode” then “Mouse”.



**Step 9:** Make appropriate channel assignments. This is where you define which sensor or switch is *Mouse Up/Down*, *Mouse Left/Right*, and *Mouse Click*.

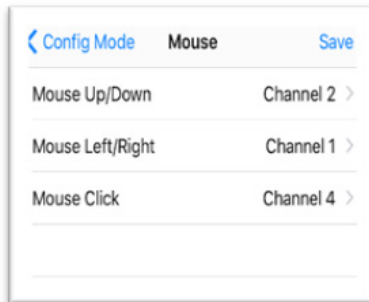
A) Factory assignments are as follows:

- Mouse Up/Down: Channel 5 (Forward)
- Mouse Left/Right: Channel 1 (Right)
- Mouse Click: Channel 4 (Mode)

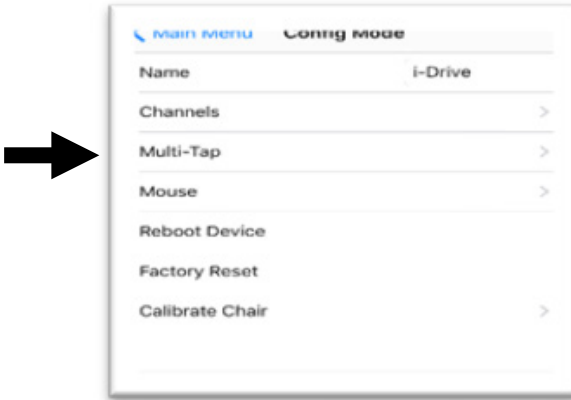
**Step 10:** Save assignments before exiting this page!

A) For example: Mouse Up/Down= Forward

Mouse Click= Left

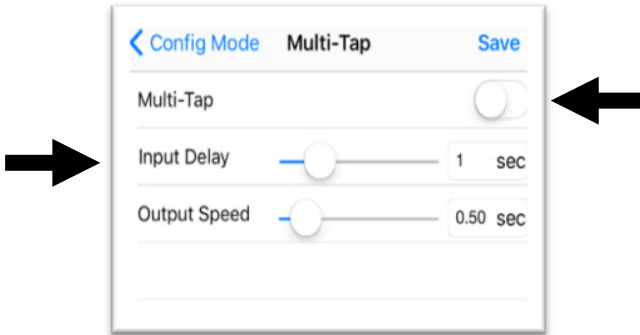


**Step 11:** Return to “Config Mode” and enter “Multi Tap”.



**Step 12:** Set “Multi Tap” slider to the “On” position. Then set “Input Delay” to the lowest setting in which the user can achieve 3 taps of the mouse click command.

**Step 13:** Save settings before exiting this page!



**Step 14:** The i-Drive is now ready for mouse emulation use.

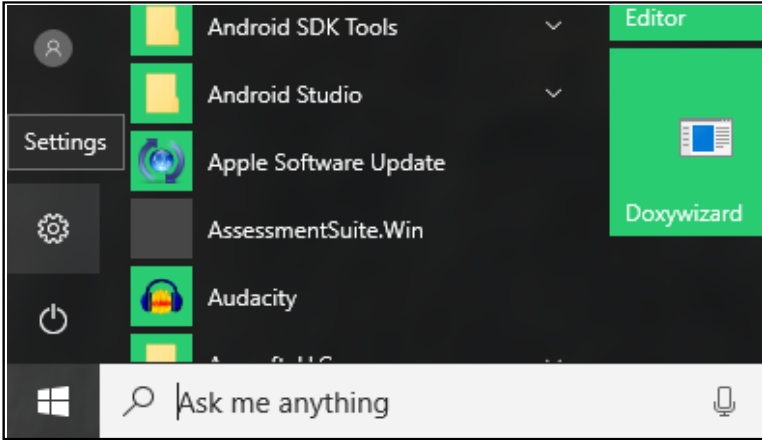
## Bluetooth Preparations

### 9.1

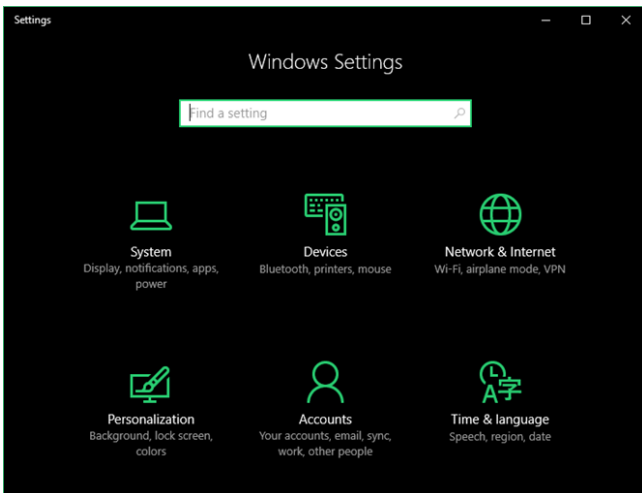
#### Windows

Preparation (Pairing the i-Drive with Windows)

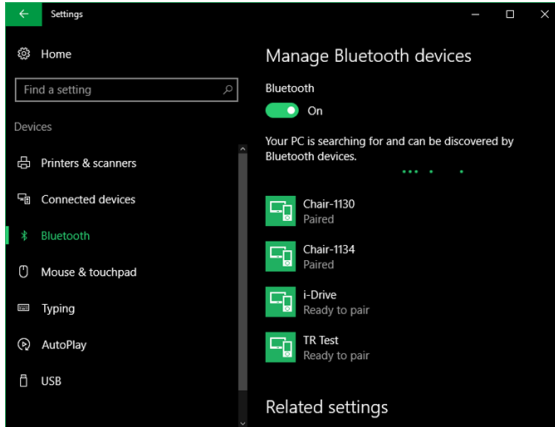
**Step 1:** Open the *Settings Application* (in Windows 8 and 10 this is the gear icon).



**Step 2:** Go to "Devices".



**Step 3:** Go to *Bluetooth* on the left pane.

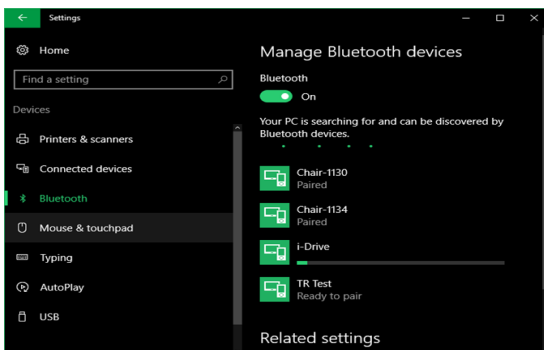


**Step 4:** If Bluetooth is not turned on, turn it on.

**Step 5:** Windows will automatically begin scanning for devices. Look for your i-Drive (usually named “i-Drive”).

**Step 6:** Click on the i-Drive and a window will appear asking you to enter the PIN. This is the serial number on the Stealth Products sticker on the i-Drive case. Click “OK” after you have finished entering the PIN.

**Step 7:** If you entered your PIN correctly, a progress bar should show for your device:

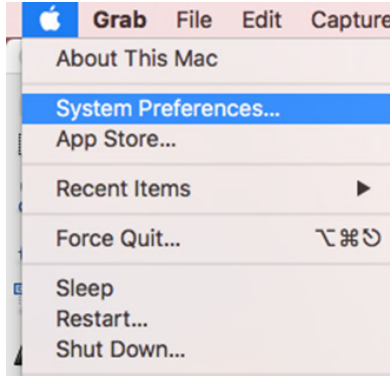


**Step 8:** Once successful, the progress bar should change to the text “Paired”.

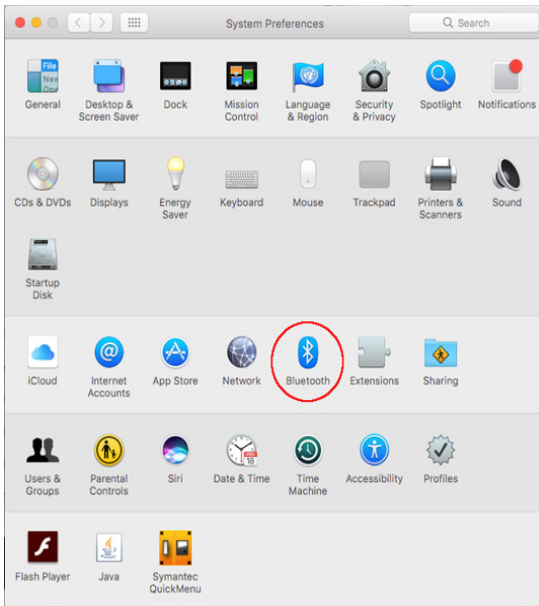
## Mac

### Preparation (Enabling Bluetooth)

**Step 1:** Open the *System Preferences Application*.



**Step 2:** Go to *Bluetooth*.



**Step 3:** If Bluetooth is not turned on, click *Turn Bluetooth On*.

## Software Installation

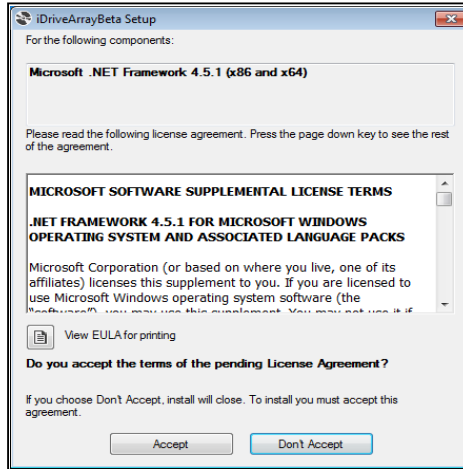
## 10.1

### Windows

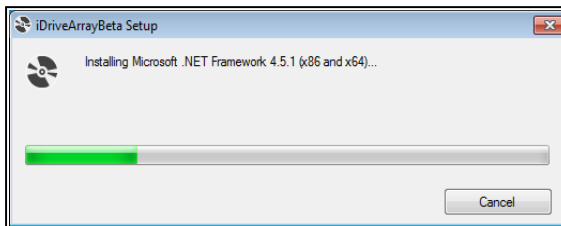
**Step 1:** Run setup.exe for the i-Drive Mouse Emulation Software.

**Step 2:** If you do not have .NET Framework 4.5.1 installed, the installer will try to install it for you.

If you already have .NET Framework 4.5.1 installed, it will skip to Step 4.



**Step 3:** Click "Accept" and the .NET Framework 4.5.1 installation will begin.



**Step 4:** At some point, you may be asked if you want to allow the program to make changes to the computer. Click "Yes" and enter any admin credentials if necessary.

**Step 5:** The installation will begin and the software will automatically start when installation has finished.

**Step 6:** If any of the above steps failed, re-run the setup.exe.

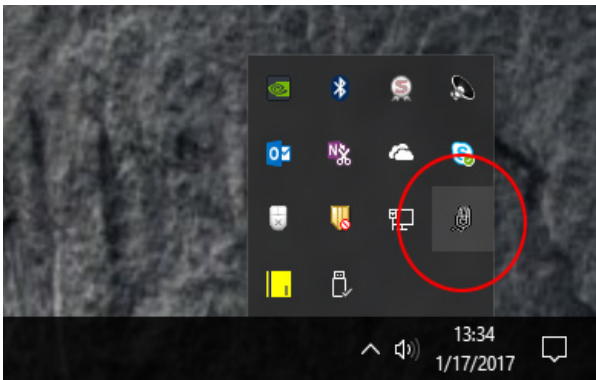


## Windows Usage & Registration

**Step 1:** Launch the i-Click application.

*(Note: You may receive an error message saying that no valid i-Drive was found. This is typical for new installations as the software needs to be registered. This message may also appear if the computer is restarted and the i-Drive is not in range on start up.)*

**Step 3:** Right click on the Mouse Emulation icon in the system tray.



**Step 4:** Select “Registration” and a window should appear with your i-Drive’s serial number if it has been paired with the PC. If not, enter your i-Drive’s serial number manually.

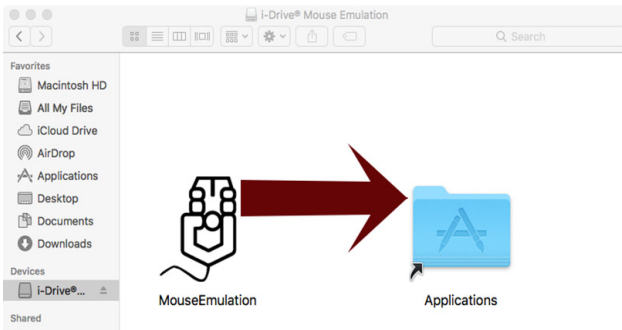
**Step 5:** You should then see one of these messages:

- A) If a license has been purchased for the given i-Drive serial number, you should see a success message indicating that all features have been unlocked. We hope you enjoy i-Click!
- B) If there is no Internet connection, the app will display an error. Please check that your network connection has access to the internet in order to complete registration.
- C) If no valid license has been found, the app will display an error. The software license is only valid for one i-Drive. If you are using a different i-Drive, please click the “Purchase License” button to purchase a new license for the i-Drive you wish to use.

## Mac

**Step 1:** Open “i-Drive Mouse Emulation.DMG”.

**Step 2:** Drag the Mouse Emulation application into the Applications folder as shown by the arrow in the .DMG window.



**Step 3:** Unmount the .DMG by clicking the “Eject” icon next to it in the left column in Finder.

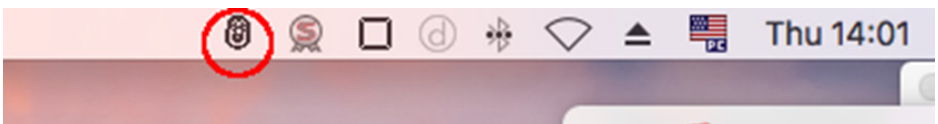
## Mac Usage and Registration

**Step 1:** Launch the i-Click application from the Applications folder.

*(Note: You may receive an error message saying that no valid i-Drive was found. This is typical for new installations as the software needs to be registered. This message may also appear if the computer is restarted and the i-Drive is not in range on start up.)*

**Step 3:** A message may appear asking you to enter the Bluetooth PIN for the i-Drive. Make sure it is connecting to the correct i-Drive and that the correct serial number for the i-Drive for the Bluetooth PIN has been entered.

**Step 4:** Click on the Mouse Emulation icon in the Menu Bar.



**Step 5:** Select *“Registration”* and a window should appear with the i-Drive’s serial number if it has been paired with and successfully connected to the Mac as defined in *Step 3*.

**Step 6:** One of the three messages should appear:

- A) If a license has been purchased for the given i-Drive serial number, you should see a success message indicating that all features have been unlocked. i-Click is now ready for use.
- B) If there is no internet connection, the app will display an error. Please check if your network connection has access to the internet in order to complete registration.
- C) If no valid license has been found, the app will display an error. The software license is only valid for one i-Drive. If you are using a different i-Drive, please click the *“Purchase License”* button to purchase a new license for the i-Drive you wish to use.

## Before Using Emulation

## 11.1

### Before Use

**Step 1:** Ensure that you are in range of the device you intend to use mouse emulation with.

- Usual range is up to 30 feet.

**Step 2:** Ensure the device has the *Bluetooth* option turned on.

### To Use

**Step 1:** To enter mouse emulation on the i-Drive:

A) Come off all switches/sensors for 3 seconds.

B) Triple click the switch/sensor set for “*Mouse Click*”.

-*Mouse Up/Down & Mouse Left/Right* commands will auto toggle. This means they will switch directions every time a new command is given.

**Step 2:** To return to drive control on the i-Drive:

A) Triple click the switch/sensor set for “*Mouse Click*”.

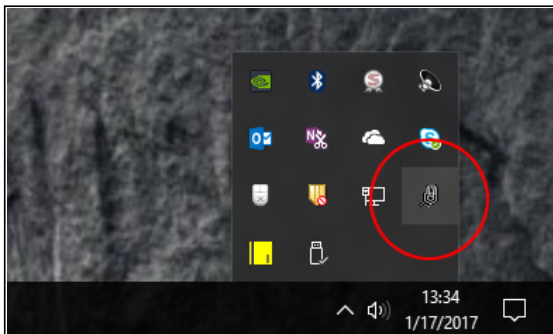
**(Note:** *Triple clicks must be occur in the time frame set by the Input Delay setting from i-Drive Configuration on Page 4.)*

## Optional Settings

## 11.2

### Windows

**Step 1:** Right click on the Mouse Emulation icon in the system tray.



**Step 2:** Click on *“Configuration”*. A new window should appear with 2 options:

- A) *Ramping Speed-controls* pointer acceleration.
- B) When *“Dragging Enabled”* is checked:
  - A single mouse click will allow you to drag items.
  - When two directional commands are given simultaneously you can highlight groups of items.
  - When you click and hold, the i-Drive will issue a *“Right Click”* command.

## Mac

**Step 1:** Click on the Mouse Emulation icon in the Menu bar.



**Step 2:** Click on *“Configuration”*. A new window should appear with 2 options:

- A) *Ramping Speed-controls* pointer acceleration.
- B) When *“Dragging Enabled”* is checked:
  - A single mouse click will allow you to drag items.
  - When two directional commands are given simultaneously you can highlight groups of items.
  - When you click and hold, the i-Drive will issue a *“Right Click”* command.

## Dealer Assistance

### 12.1

During first time use by the client, it is advised that the dealer or service technician assists and explains the configuration to the customer (the user and/or the attendant). If needed, the dealer can make final adjustments.

## User Testing

### 12.2

It is important that the customer is fully aware of the installation and what can be adjusted in order to allow the customer the best driving possibilities.

- Explain and show the client how you have executed the installation.
- Can the user safely operate the wheelchair?
- Is the i-Click program properly installed and programmed in the best way for the client?

If needed, make any adjustments to the program.

Explain to the customer possible problems and how to address them.

## Conditions of Use

### 12.3

i-Click is intended for use as installed by the dealer, in accordance to the installation instructions in this manual.

- The foreseen conditions of use are communicated by the dealer or service technician to the user and/or attendant during the first time use.
- If the usage conditions change significantly, please contact your dealer or a qualified service technician to avoid unintended damage.

## Care and Maintenance

### 13.1

In order for i-Click to work properly, the i-Drive interface must be regularly checked. Follow these maintenance instructions to keep the i-Drive functioning:

- Keep electronics dry and out of the water.
- Periodically check the hardware for loose screws or worn parts. Replace or repair the parts as needed.
- To clean the aluminum, use a mild, nonabrasive household cleaner.
- On the hardware, lightly tighten set screws until they are snug, then tighten an extra quarter turn.
- Ensure strain relief is tight (slightly pull on power cord and ensure strain relief is tight).

#### **WARNING**

Do not overtighten set screws. Over tightening set screws will prevent hardware from functioning properly and could cause irreversible damage to the hardware.

## Safety

### 13.2

Avoid getting electronics wet and working on electronics with wet or damp hands. This could cause minor to severe electrocution, resulting in personal injury and/or product damage.

#### **CAUTION**

Periodically check Diagnostics for real-time data information to verify that all sensors are functioning properly.

## Technical Data

### 13.3

The i-Drive interface was tested and found to be in compliance with the required criteria and met the standards of IEC60601-1-2:2014 (Edition 4.0); RESNA WC-2:2009.

