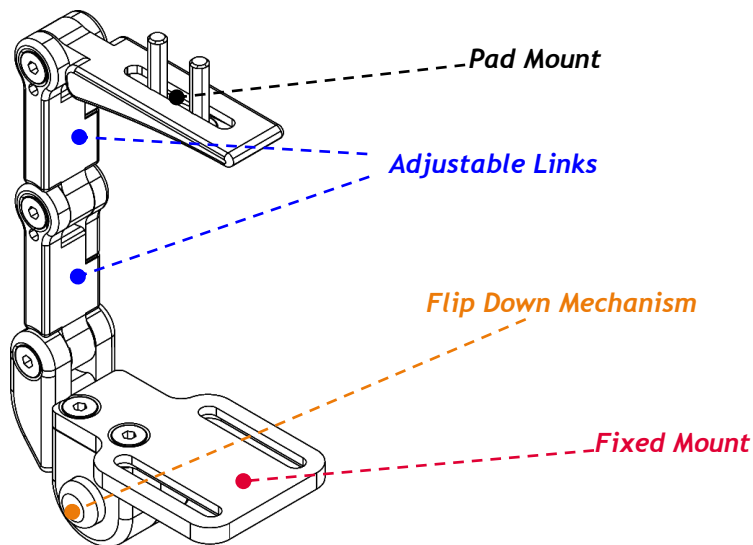


TECHNICAL SPECIFICATIONS



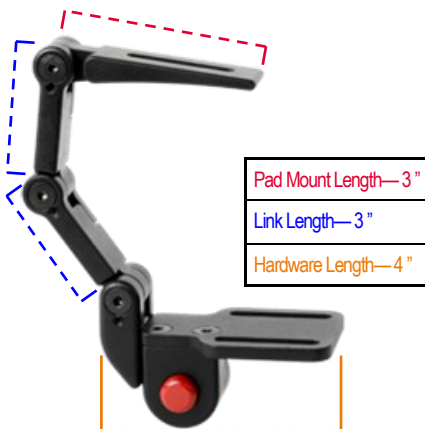
MTHW620

A hip abductor or pommel is used to maintain the legs in an abducted position. The MTHW600 fixed flip down link style hardware includes a fixed mounting bracket, adjustable links, and swing away for easy user transfers.

The MTHW620 includes:

1. Pad Mount
2. Adjustable Links
3. Flip Down Mechanism
4. Fixed Mount

DIMENSIONS



MEDIAL THIGH MODIFICATION



Adjustable Pad

Stealth's MTMD-42 allows adjustment in multiple angles/planes. Comes standard with dual 3x5" pads and slip cover.

Full Surface Contact

The MTMD-613 full surface contact feature includes a ball mount for the medial pad allowing for support on an adjustable 360° axis.



TECHNICAL DATA

1. 5/32 tool for link adjustment.
2. 5/32 tool for 1/4-20 button head screws (Mounting and pad screws).
3. 3/16 tool for 1/4-20 socket head screws (Guide screws).

SELLING POINTS

1. Adjustable link technology can be positioned for a multitude of angles.
2. Flip down technology that makes user transfers simple and easy.

MEDIAL PADS



Wedge Style Pads

MTMD-12—Small Pad
MTMD-13—Medium Pad
MTMD-14—Large Pad
MTMD-19—Custom Pad



Oval Style Pads

MTMD-21—Extra Small Pad
MTMD-22—Small Pad
MTMD-23—Medium Pad
MTMD-24—Large Pad
MTMD-29—Custom Pad



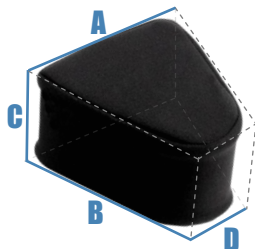
Knee Cut Out Style Pads

MTMD-32—Small Pad
MTMD-33—Medium Pad
MTMD-34—Large Pad
MTMD-39—Custom Pad

Size	Length	Width	Height
Extra Small*	3 ½"	2 ½"	3"
Small	4"	3"	3"
Medium	5"	4 ½"	3"
Large	5"	5"	4"

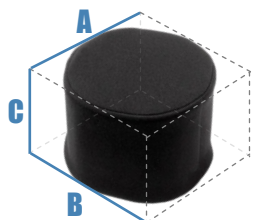
*Only oval style pads come in the extra small size.

WEDGE STYLE PAD DIMENSIONS



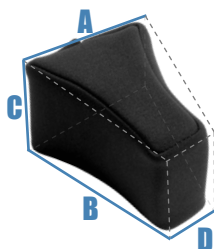
	Size	A	B	C	D
MTMD-12	Small	3"	4"	3"	2"
MTMD-13	Medium	4.5"	5"	3"	2"
MTMD-14	Large	5"	5"	4"	3"
MTMD-19	Custom	Custom Defined Dimensions			

OVAL STYLE PAD DIMENSIONS



	Size	A	B	C
MTMD-21	Extra Small	2.5"	3.5"	3"
MTMD-22	Small	3"	4"	3"
MTMD-23	Medium	4.5"	5"	3"
MTMD-24	Large	5"	5"	4"
MTMD-29	Custom	Custom Defined Dimensions		

KNEE CUT-OUT PAD DIMENSIONS



	Size	A	B	C	D
MTMD-32	Small	3"	4"	3"	2"
MTMD-33	Medium	4.5"	5"	3"	2"
MTMD-34	Large	5"	5"	4"	3"
MTMD-39	Custom	Custom Defined Dimensions			

ADJUSTABLE POMMEL MODIFICATION SPECIFICATIONS

MTMD-42

Stealth's adjustable medial pad allows adjustment in multiple angles/planes. Comes standard with dual 3x5" pads and slip cover.

The pad connects to the planar mount with a track and track nut. This allows the pad to be positioned fore and back on the planar mount.

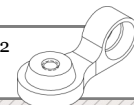
These screws allow the hardware's depth position to be adjusted.

This adjustment screw allows you to change the angle of the pads.



The MTMD-42 mounts onto a medial thigh support hardware* (linking hardware does not utilize this bracket)

When mounting on linking hardware, the MTMD-42 utilizes an adapter to attach to the links.



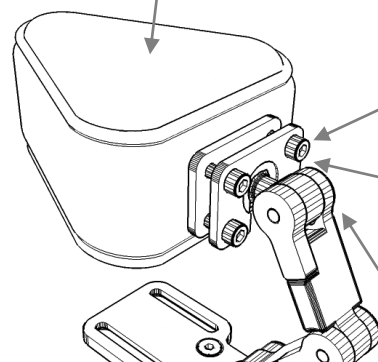
More information available at www.stealthproducts.com

FULL SURFACE CONTACT FEATURE SPECIFICATIONS

The Full Surface Contact is compatible with the MTHW-620 & MTHW-630

MTMD-613

The Full Surface Contact feature for medial includes a ball mount for the medial pad allowing for support on an adjustable 360° axis.



The FSC can be adjusted by these four screws (loosen to adjust, tighten to hold)

The ball mount allows for movement and rotation on an axis, and provides great adjustability.

The Full Surface Contact connects directly to the links with Stealth's ball mount.