

# Building Laterals

## What to consider when building Laterals: Four Easy Steps!



### Step 1: Chair Type

Start with the type of chair you will be mounting laterals to: Cane mount, Track Mount, Mounting directly to the back. This will help you determine the mounting hardware you will need. Some types of chairs have specific laterals already designed for them so see if you fit this category. Use our handy "Lateral Quick Reference Guide" as a starting point.

### Step 2: Choosing Links

Once you determine the mounting hardware it will simply be a step of deciding the amount of links you will need to reach your client and get the support you are looking for. A standard pair of laterals comes with two links and the swing away giving you approximately 6" of adjustment per side.

### Step 3: Pads & Materials

Now take into consideration pad size and materials, 3x5 and 4x6 are our standard pad sizes. Neoprene is the standard material. You can customize pads and materials, if your client needs Gel or reverse Dartex.

### Step 4: Additions or Modifications

Choose Hardware Mods or additions; Full Surface Contact, All Season, Additional Links or Link Covers



Permobil Corpus

Formula Mount



Cane Mounted



**Note:** This should be used as a general reference for product applications. Final decisions regarding size, material, foam, and gel placement should be left to qualified individuals who are familiar with the client's specific needs through evaluation and/or trial and observation.

# Adjustability / FSC

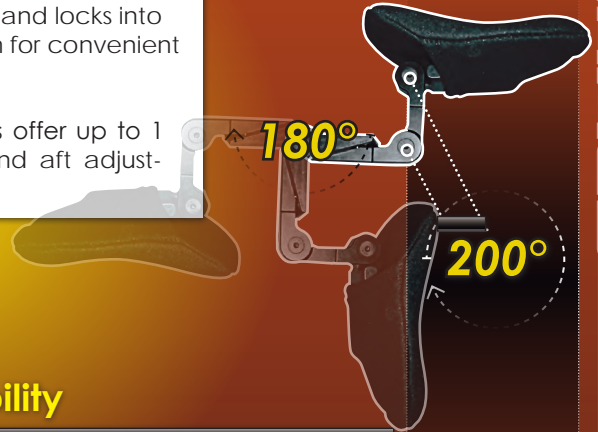
TWB Laterals offer articulating, adjustable link hardware and accessories that accommodate any individual's asymmetries.



Angles just right. Snugs up and locks - **No Excuses!**

Swings 180° and locks into rear position for convenient transfers.

Pad mounts offer up to 1 3/4" fore and aft adjustment.



## Adjustability

TWBL's unique link system offers up to 200° of adjustment. Additional links may be added for larger offsets.

**New!** ASTWBL



**The ASTWBL Laterals for "All Seasons"**

New to Stealth is the dynamic width adjustable Lateral. Needing no tools, very quick and totally intuitive. The ASTWBL Laterals are adjustable as and when needed, infinitely over a 4" range per side (8" overall per two laterals). The ASTWBL's can be used with the regular TWBL or the New TWBL-FSC's and the TWBTL thin laterals.



The ideal laterals need to imitate the movement of hands, arms and wrists so they can get to the "Right" spot and stay there! This is exactly what TWB Laterals are designed to do!

Now the **TWBTL** Hardware thickness has been reduced 25%. So TWB Laterals snug more easily and still retain all the strength, flexibility and function that make them The World's Best Laterals.

## PRESSURE DISPERSMENT (FSC)



Full Surface Contact (FSC) Laterals are essential for providing necessary pressure dispersment to asymmetrical individual's. FSC Laterals combine articulating link hardware with 360° pad.

See "**Modification Table**" for upgrades

# Additional Adjustability

LEFT OR RIGHT  
LINKS



**TWBL-LINK**

ALL SEASON  
LATERAL MOUNT  
Pad not included



**ASTWBL (Pair)**

FSC



**TWBL-FSC**

## Lateral Pads



CURVED

STANDARD SIZES  
(CUSTOM SIZES AVAILABLE)

When ordering Laterals consider these modifications for best results:

1. Adding extra links to get the reach you need (2-1/4" per Link).
2. Custom Pad Shapes; D-Forward, Tapered, Curved, Contour, (see *Modifications table*).
3. Custom Foam or Gel; Pudgee foam, SunMate foam, T-Foam or 1/2" Gel Addition, (see *Modifications table*).
4. Consider Materials; Dartex, Reverse Dartex, Neoprene, or Vinyl (*Custom Colors also available*).
5. Hardware Modifications or additions; **TWBL-FSC** (*Full Surface Contact*), **ASTWBL** (*All Season Brackets*), **TWBL-LINKS** (*Extra Links*)

This should give you a brief overview of available options.

New!



**TWBL**



**TWBL**

LT500 Fixed



**TWBL-PLN**



1" • 7/8" • 3/4"



**TWBL-TRK**



**TWBL-CGT**



**TWBL-SS**

## Bracket Covers



Bracket Covers  
for the TWBL Lateral Links

Part Numbers	Cover Length	Accommodates
<b>TWBL-LC3</b>	3"	Standard
<b>TWBL-LC5</b>	5"	Long
<b>TWBL-LCC</b>	n/a	Custom*

\* Specify Length

See "Modification Table" for upgrades

# Lateral Quick Reference Guide

Coding	Hardware (E1028)	Pad (E0956)
<b>Company</b>	<b>Make</b>	<b>Lateral</b>
<b>Invacare</b>	Manual Tilts	1" Canes
	Power Chairs	7/8" Canes
	Formula Contoura	<u>TWBL-FC</u>
	Tilt/Recline	<u>TWBL-2GTR</u>
<b>Motion Concepts</b>	Track	<u>TWBL-2GTR</u>
	Cane	7/8"
<b>Quickie Sunrise</b>	<b>Manual</b>	
	Cane	7/8 Canes
	Recliner	7/8" Canes
	Two	7/8" Canes
	Iris	1" Canes
	<b>Power Chairs</b>	
	Cane	7/8"
	Rhythm	<u>TWBL-CGI</u>
<b>Pride/Quantum</b>	Cane	1"
	Tru Balance	<u>TWBL-SS</u>
	Tru Comfort	<u>TWBTL-PCF</u>
<b>Ti Life</b>	Manual	3/4" Canes
<b>Permobil</b>	Corpus	<u>TWBL-PCS</u>
	Cane	1"
<b>PDG</b>	Stellar	7/8" Canes
<b>Redman</b>	Cane	7/8"

# Lateral Part Numbers & Upgrades

<i>Set Part Number</i>	<i>Description</i>	<i>Individual Part Number</i>
<b><u>TWBL-TUB-3/4"</u></b>	Pair for 3/4" Tubing Mount +	<b><u>TWBL-TUB-3/4"-R*</u></b> <b><u>TWBL-TUB-3/4"-L**</u></b>
<b><u>TWBL-TUB-7/8"</u></b>	Pair for 7/8" -Tubing Mount +	<b><u>TWBL-TUB-7/8"-R*</u></b> <b><u>TWBL-TUB-7/8"-L**</u></b>
<b><u>TWBL-TUB-1"</u></b>	Pair for 1" -Tubing Mount +	<b><u>TWBL-TUB-1"-R*</u></b> <b><u>TWBL-TUB-1"-L**</u></b>
<b><u>TWBL-CGT</u></b>	Pair- Smart Seat System +	<b><u>TWBL-CGT-R*</u></b> <b><u>TWBL-CGT-L**</u></b>
<b><u>TWBL-TRK</u></b>	Stealth Track Mounting System +	<b><u>TWBL-TRK-R*</u></b> <b><u>TWBL-TRK-L**</u></b>
<b><u>TWBL-PCS</u></b>	Permobil Corpus Seating +	<b><u>TWBL-PCS-R*</u></b> <b><u>TWBL-PCS-L**</u></b>
<b><u>TWBL-2GTR</u></b>	Invacare 2nd Generation Motion Concepts Track +	<b><u>TWBL-2GTR-R*</u></b> <b><u>TWBL-2GTR-L**</u></b>
<b><u>TWBL-FC</u></b>	Invacare Formula Contura +	<b><u>TWBL-FC-R*</u></b> <b><u>TWBL-FC-L**</u></b>
<b><u>TWBL-SS</u></b>	Pride/Quantum Tru Balance +	<b><u>TWBL-SS-R*</u></b> <b><u>TWBL-SS-L**</u></b>
<b><u>TWBTL-PCF</u></b>	Pride/Quantum Tru Comfort +	<b><u>TWBTL-PCF-R*</u></b> <b><u>TWBTL-PCF-L**</u></b>
<b><u>TWBL-PLN</u></b>	Planar Seating Mount +	<b><u>TWBL-PLN-R*</u></b> <b><u>TWBL-PLN-L**</u></b>
<b><u>TWBTL</u></b>	Thin Articulating, Adjustable, Swingway Hardware+	
<b><u>LT500</u></b>	Fixed Mount Laterals For One Side Only+	
+ Include Pads • * Right Side Only • ** Left Side Only		

## UPGRADES

<i>Set Part Number</i>	<i>Description</i>	<i>Individual Part Number</i>
<b><u>TWBL-LINK</u></b>	TWB Lateral Link Assembly 2 1/4" Long	Add a Link for TWBL Laterals Purchase 2 for a set of Laterals
<b><u>TWBL-FSC</u></b>	Pressure Point/Pressure Sore Prevention - Full Surface Contact (FSC) Feature - Set	Upgrade Laterals with the FSC option.
<b><u>ASTWBL</u></b>	Articulating, Adjustable, Swing-Away Hardware w/All Season Brackets	<b><u>ASTWBL-R*</u></b> <b><u>ASTWBL-L**</u></b>
+ Include Pads • * Right Side Only • ** Left Side Only		

Place your order today and upgrade your level of comfort  
For more information log on to [www.stealthproducts.com](http://www.stealthproducts.com)

# Niño Lateral Hardware



Part No. Set	LATERALS	Part Number each
<b><u>TWBNL-TUB-3/4"</u></b>	Pair for 3/4" Tubing Mount +	TWBNL-TUB-3/4"-R * TWBNL-TUB-3/4"-L **
<b><u>TWBNL-TUB-7/8"</u></b>	Pair for 7/8" Tubing Mount +	TWBNL-TUB-7/8"-R * TWBNL-TUB-7/8"-L **
<b><u>TWBNL-TUB-1"</u></b>	Pair for 1" Tubing Mount +	TWBNL-TUB-1"-R * TWBNL-TUB-1"-L **
<b><u>TWBNL-CGT</u></b>	Pair • Smart Seat System +	TWBNL-CGT-R * TWBNL-CGT-L **
<b><u>TWBNL-TRK</u></b>	Pair • Track Mounting System +	TWBNL-TRK-R * TWBNL-TRK-L **
<b><u>TWBNL-PLN</u></b>	Pair • with Planar Mount +	TWBNL-PLN-R * TWBNL-PLN-L **
<b><u>NLT510</u></b>	Fixed Mount Laterals +	
<b><u>TWBNL-LINK</u></b>	TWB Lateral Link Assembly 2 1/4" Long	Add a Link for TWBNL Niño Laterals Purchase 2 for a set of Laterals

+ Include Pads • \* Right Side Only • \*\* Left Side Only



# Niño Lateral Additional Adjustability

LEFT OR RIGHT  
LINKS



**TWBNL-LINK**

ALL SEASON  
LATERAL MOUNT  
\*Pad Not Included



**ASTWBNL (Pair)**



**FSC**

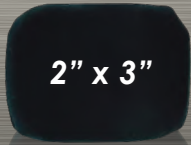
**TWBL-FSC**

Niño style does not include the FSC upgrade

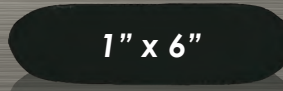
## Lateral Pads



3" x 3"



2" x 3"



1" x 6"

Curved  
STANDARD SIZES

Custom Sizes Available

## Bracket Covers



Bracket Covers

Part Numbers	Cover Length	Accommodates
<a href="#">TWBNL-LC2</a>	2"	Pediatric • Standard
<a href="#">TWBNL-LC4</a>	4"	Pediatric • Long
<a href="#">TWBNL-LCC</a>	n/a	Custom*

\* Specify Length

## MODIFICATIONS

### Pad Modifications

<a href="#">LTMD400</a>	Custom Pad Size* (H:    x D:    )
<a href="#">LTMD401</a>	Contoured Pelvic Support
<a href="#">LTMD402</a>	Tapered Front Edge For Lateral Support
<a href="#">LTMD403</a>	Flat Metal Base
<a href="#">LTMD404</a>	Curved Metal Base
<a href="#">LTMD405</a>	D-Forward Shape Modification**
<a href="#">LTMD406</a>	Tapered Modification**
<a href="#">LTMD407</a>	Tear Drop Modification**

[\*] Specify Height and Depth    [\*\*] Specify Dimensions

### Pad Modifications

<a href="#">LTMD408</a>	Structural Custom Medial Support*
<a href="#">LTMD420</a>	1/2" Gel in Pelvic Support
<a href="#">LTMD421</a>	1/2" Sunmate in Thigh/Thoracic Support
<a href="#">LTMD422</a>	1/2" Pudgee In Thigh/Thoracic Support
<a href="#">LTMD423</a>	1/2" T-Foam in Thigh/Thoracic Support
<a href="#">LTMD430</a>	1/2" Gel In Medial Support
<a href="#">LTMD431</a>	1/2" Sunmate in Medial Support
<a href="#">LTMD432</a>	1/2" Pudgee in Medial Support
<a href="#">LTMD433</a>	1/2" T-Foam in Medial Support

[\*] Specify Height and Depth    [\*\*] Specify Dimensions

# Niño Lateral Pelvic · Thigh · Armrest Pkgs.

 <p><b>STANDARD FIXED BRACKET</b></p> <p><b>LAPN400</b></p>	 <p><b>REMOVABLE BRACKET</b></p> <p><b>LAPN401</b></p>	 <p><b>REMOVABLE &amp; HEIGHT ADJUSTABLE</b></p> <p><b>LAPN402</b></p>
--	---	---

## Niño Lateral Pelvic / Thigh Packages

 <p><b>STANDARD BRACKET &amp; PAD</b></p> <p><b>LPN420</b></p>	 <p><b>MODULAR BRACKET &amp; PAD</b></p> <p><b>LPN421</b></p>	 <p><b>20° ADJUSTABLE FIXED BRACKET &amp; PAD</b></p> <p><b>LPN422</b></p>
--	---	--

 <p><b>HIGH PROFILE BRACKET &amp; PAD</b></p> <p><b>LPN423</b></p>	 <p><b>REMOVABLE BRACKET &amp; PAD</b></p> <p><b>LPN424</b></p>	 <p><b>20° ADJUSTABLE &amp; REMOVABLE BRACKET &amp; PAD</b></p> <p><b>LPN425</b></p>
---	--	---

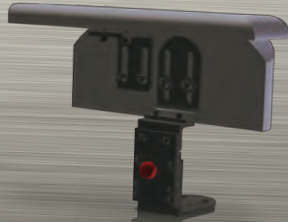
# Pelvic · Thigh · Armrest Packages

## Lateral Pelvic / Arm Rest Packages



STANDARD  
FIXED BRACKET

LAP400



REMOVABLE  
BRACKET

LAP401



REMOVABLE  
& HEIGHT ADJUSTABLE

LAP402

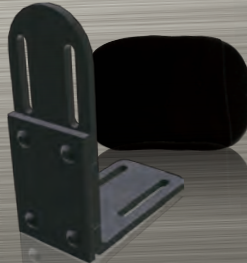


## Lateral Pelvic



STANDARD  
BRACKET & PAD

LP410



MODULAR  
BRACKET & PAD

LP414



20° ADJUSTABLE  
FIXED BRACKET & PAD

LP416



HIGH PROFILE  
BRACKET & PAD

LP412



REMOVABLE  
BRACKET & PAD

LP411



20° ADJUSTABLE  
& REMOVABLE BRACKET & PAD

LP413



# Medial Support Packages

## Hardware

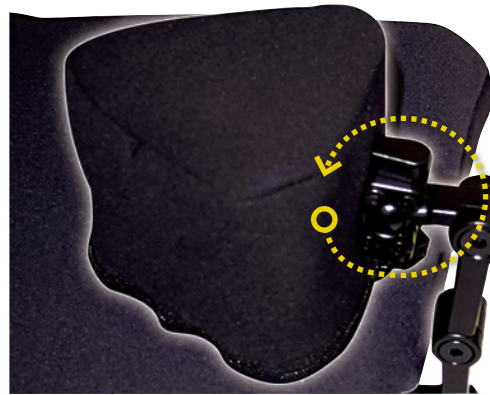


### Part Numbers

### Pommel Hardware

<b>FM-ABD</b>	Fixed Mount with Pad
<b>TWBABD</b>	Flip Down Swing Away Bracket + Pad
<b>TWBABD-FSC</b>	Flip Down Swing Away Bracket + Pad w/Full Surface Contact Technology

Above part numbers include pad  
(Please specify pad size from "Pad" tables below)



### ABD-FSC Abductor

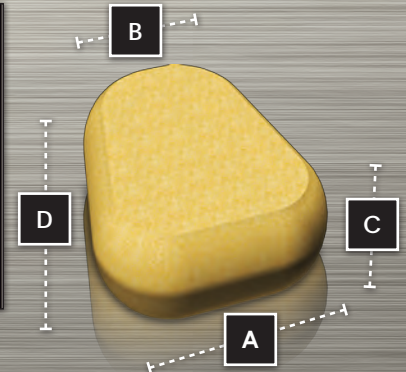
Once again, typical Abductors are symmetrical devices and many clients are asymmetrical and need specifically angled pads/pommels. Stealth has solved this by developing the ABD-FSC Abductor.

The Abductor has infinite angle capability and flip down hardware.

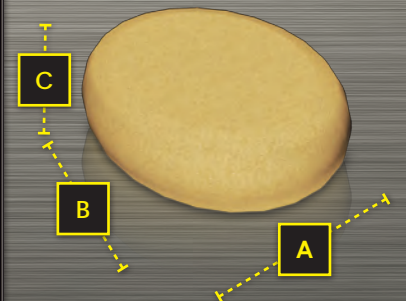


## Pads

Part#	Wedge Pommel Pads	A	B	C	D
<b>ABD-WSP</b>	Small Abductor Pad	3	2	3	4
<b>ABD-WMP</b>	Medium Abductor Pad	4-1/2	2	3	5
<b>ABD-WLP</b>	Large Abductor Pad	5	3	4	5
<b>ABD-WCP</b>	Custom Abductor Pad	SPECIFY			



Part#	OVAL Pommel Pads	A	B	C
<b>ABD-OXSP</b>	Xtra Small Abductor Pad	2-1/2	3-1/2	3
<b>ABD-OSP</b>	Small Abductor Pad	3	4	3
<b>ABD-OMP</b>	Medium Abductor Pad	4-1/2	5	3
<b>ABD-OLP</b>	Large Abductor Pad	5	5	4
<b>ABD-OCP</b>	Custom Abductor Pad	SPECIFY		



See "Modification Table" for upgrades

# Additional Adjustability



**TWBADD**  
HIP • THIGH

Specify Size



## MODIFICATIONS

### PAD MODIFICATIONS

<u>LTMD400</u>	Custom Pad Size (H: X D: )
<u>LTMD401</u>	Contoured Pelvic Support
<u>LTMD402</u>	Tapered Front Edge For Lateral Support
<u>LTMD403</u>	Flat Metal Base
<u>LTMD404</u>	Curved Metal Base
<u>LTMD405</u>	D-Forward Shape Modification (Dims: )
<u>LTMD406</u>	Tapered Modification (Dims: )
<u>LTMD407</u>	Tear Drop Modification (Dims: )
<u>LTMD408</u>	Structural Custom Medial Support (Dims: )
<u>LTMD420</u>	1/2" Gel in Pelvic Support
<u>LTMD421</u>	1/2" Sunmate in Thigh/Thoracic Support
<u>LTMD422</u>	1/2" Pudgee In Thigh/Thoracic Support
<u>LTMD423</u>	1/2" T-Foam in Thigh/Thoracic Support
<u>LTMD430</u>	1/2" Gel In Medial Support
<u>LTMD431</u>	1/2" Sunmate in Medial Support
<u>LTMD432</u>	1/2" Pudgee in Medial Support
<u>LTMD433</u>	1/2" T-Foam in Medial Support

## Bracket Covers



Part Numbers	Cover Length	Accommodates
<u>TWBL-LC3</u>	3"	Standard
<u>TWBL-LC5</u>	5"	Long
<u>TWBL-LCC</u>	n/a	Custom*

\* Specify Length

See "Modification Table" for upgrades

# Positioning Belts

POSITIONING BELTS AND LOWER SUPPORT

**H-BELT**



Part#	Padded H-Belts
<u>SPHBS</u>	Small
<u>SPHBM</u>	Medium
<u>SPHBL</u>	Large

**BUTTERFLY CHEST BELT**



Part#	Butterfly Chest Belt
<u>SPBFEX</u>	Extra Small
<u>SPBFS</u>	Small
<u>SPBFM</u>	Medium
<u>SPBFL</u>	Large

**DYNAMIC BUTTERFLY BELT**




Part#	Dynamic Butterfly Belt
<u>SPDBFXS</u>	Extra Small
<u>SPDBFS</u>	Small
<u>SPDBFM</u>	Medium
<u>SPDBFL</u>	Large

**PADDED HIP BELT**  
CENTER PULL



Part#	Center Pull
<u>SPPHBS-CP</u>	Small
<u>SPPHBM-CP</u>	Medium
<u>SPPHBL-CP</u>	Large

**PADDED HIP BELT**  
FOUR POINT BELT



Part#	Four Point Belt
<u>SPPHBS-CP4</u>	Small
<u>SPPHBM-CP4</u>	Medium
<u>SPPHBL-CP4</u>	Large

# Lower Extremity Support



**DOUBLE LEG  
FOOT BOX**

**Part# Double Leg Foot Boxes**

<b>SPFB-DLS</b>	Small 11" wide x 8" deep x 7" high.
<b>SPFB-DLM</b>	Medium 13" wide x 10" deep x 9" high
<b>SPFB-DLL</b>	Large 15" wide x 12" deep x 11" high
<b>SPFB-DLC</b>	Custom



**SINGLE LEG  
FOOT BOXES**

**Part# Single Leg Foot Boxes**

<b>SPFB-SLS</b>	Small 5" wide x 8" deep x 7" high
<b>SPFB-SLM</b>	Medium 6" wide x 10" deep x 9" high
<b>SPFB-SLL</b>	Large 7" wide x 12" deep x 11" high
<b>SPFB-SLC</b>	Custom



**SHOE HOLDER  
FOOT SUPPORT**

**Part# Shoe Holder**

<b>SPFS-S</b>	Foot Supports • Small 3.75" x 6.25"
<b>SPFS-M</b>	Foot Supports • Medium 4" x 8.25"
<b>SPFS-L</b>	Foot Supports • Large 4" x 9.75"
<b>SPFS-XL</b>	Foot Supports • Ex Large 5" x 10.75"

POSITIONING BELTS AND LOWER SUPPORT

# Modification, Mounting & Description

Part Number	Tray Description
<u>ST100</u>	X-Small Clear 1/4" Lexan w/Wood Trim, Heavy Duty Hardware
<u>ST105</u>	X-Small Clear 1/4" Lexan - Tray Only
<u>ST110</u>	Small Clear 1/4" Lexan w/Wood Trim, Heavy Duty Hardware
<u>ST115</u>	Small Clear 1/4" Lexan - Tray Only
<u>ST120</u>	Medium Clear 1/4" Lexan w/Wood Trim, Heavy Duty Hardware
<u>ST125</u>	Medium Clear 1/4" Lexan - Tray Only
<u>ST130</u>	Large Clear 1/4" Lexan w/Wood Trim, Heavy Duty Hardware
<u>ST135</u>	Large Clear 1/4" Lexan - Tray Only
<u>ST195</u>	Custom Size, Clear 1/4" Lexan - Tray Only



Part Number	Tray Modification
<u>STMD01</u>	Special Cut-Outs for Joystick- (Type: )
<u>STMD02</u>	Special Cutouts (Type: )
<u>STMD03</u>	3/8" Lexan Material Upgrade
<u>STMD04</u>	Custom Aluminum Rim
<u>STMD05</u>	Half Tray Pad
<u>STMD06</u>	Full Tray Pad
<u>STMD07</u>	Custom Size Pad (upcharge w/STMD05-06)
<u>STMD08</u>	1/2" Pudgee or Sunmate
<u>STMD09</u>	Upholstery Upgrade - (Material: )



Part Number	Mounting Hardware Descriptions
<u>STHD100</u>	Heavy Duty Mounting Hardware - per set
<u>STHD101</u>	Channel Brackets - per set
<u>STHD102</u>	Security Strap
<u>STHD103</u>	Wood Platform Runners, With Strap



**1.800.965.9229**  
[www.stealthproducts.com](http://www.stealthproducts.com)