

# Standard Specifications

## FLASH

### 11" Blue Flash (FL11-BLU)

The FLASH is a portable, rugged and convenient Pediatric Mobility Base with a clean and stylish look.

Back angle adjustment of 85, 90 & 95 degrees

Durable and Lightweight Upholstery that is easily cleaned (Available in RED GLOW and NAVY BLUE)

Extra Width Between Arms

Seat Depth Adjustments for growth

Single Folding Actuator

Wheel Lock Actuator (Locks both rear wheels with single actuation)

Rugged & Stylish (10" x 2") Urethane Wheels

Platform Front Rigging extension adjustable

Stylish & Durable (6" x 1.25") casters



Simple and unique folding mechanism

Flash in folded position

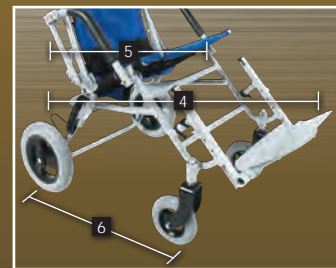
Compact and Lightweight

# Technical Specifications

## FLASH

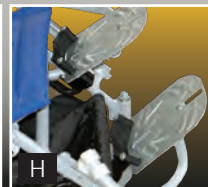
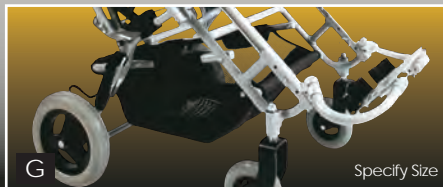
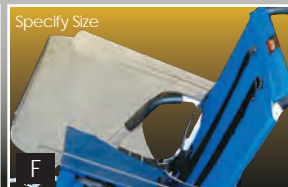
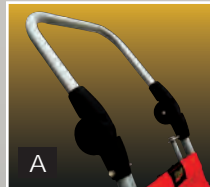
Specifications	11" Model	14" Model	16" Model
SEAT WIDTH / OUTSIDE CANES	12.75"	15.75"	16.75"
SEAT WIDTH / BETWEEN CANES	11"	14"	16"
OVERALL HEIGHT	36"	36"	38"
PUSH HANDLE HEIGHT	36"	36"	38"
OVERALL LENGTH w/ FOOTPLATE	38"	42"	44"
OVERALL LENGTH w/o FOOTPLATE	31"	35"	37"
LENGTH WHEEL TO WHEEL (maximum)	27"	27"	27"
SEAT TO FLOOR	20"@11" depth	21"@14" depth	22"
OVERALL WIDTH	19.5"	24"	25"
SEAT ANGLE (DUMP)	30°	30°	30°
BACK UPHOLSTERY	19.25"	24"	24.75"
SEAT TO FOOTREST *	1" to 12"	1" to 17"	1" to 17"
BACK ANGLE SETTINGS	85°, 90° & 95°	85°, 90° & 95°	85°, 90° & 95°
FOLDED DIMENSIONS	19.25"W x 19.25"D x 25.5"H	24"W x 19.25"D x 27.5"H	25"W x 16"D x 28"H
WEIGHT OF CHAIR (without riggings)	25 lbs	27 lbs	28 lbs
WEIGHT CAPACITY	75 lbs	100 lbs	150 lbs
FRAME COLOR CHOICES	SILVER	SILVER	SILVER
UPHOLSTERY COLOR CHOICES	NAVY BLUE • RED GLOW	NAVY BLUE • RED GLOW	NAVY BLUE • RED GLOW
FRONT WHEELS	6"	6"	6"
REAR WHEELS	10"	10"	10"
HEADREST EXTENSION	ADDS 6" OF HEIGHT	ADDS 6" OF HEIGHT	ADDS 6" OF HEIGHT
WIDTH OF BACK SEAT (tube to tube)	11" (outside - 12.75")	14" (outside - 15.5")	15" (outside - 16.75")
SEAT TO TOP OF BACK	20.25" (upholstery) 25" to handle	24" (upholstery) 25" to handle	25" (upholstery) 28" to handle
FOOTPLATE	7.25" x 5.4375"	7.25" x 5.4375"	7.25" x 5.4375"
FOOTPLATE ADJUSTMENT (fore and aft)	2"	2"	2"
FOOTPLATE MOUNTS (outside width)	15.75"	16"	17"
WIDTH BETWEEN ARMRESTS	13.5"	16.25"	17.5"
SEAT DEPTH	10" to 12"	12" to 14"	16" to 18"
TUBING	7/8"	7/8"	7/8"
OVERALL LENGTH W/O RIGGINGS	26.5"	29.5"	34"

\*(Standard extension range in 1" increments) • Note: The Flash has NOT been crash tested



## Optional Accessories

- A. LT-AH Adjustable Push Handle
- B. LT-BC Canopy
- C. LT-HR Headrest Pad
- D. LT-HRE Headrest Extension
- E. FL-SFP Single Flip-Up Foot Platform
- F. LT-WT Work-N-Play Tray
- G. LT-SB Storage Basket
- H. Dual swing away footplates (Optional)



# Standard Specifications

**Lightning**

## 16" Red Lightning (LT16-RED)

The LIGHTNING is a lightweight, highly functional Pediatric Mobility Base designed with a recreational look that compliments today's lifestyle. The LIGHTNING is an innovative vehicle specifically constructed to be extremely rugged and especially convenient for transporting and storing due to it's easy-to-operate Stand & Fold feature. For function, performance and durability in a beautiful package, the LIGHTNING is a strikingly bright choice!



Back angle adjustment of 85, 90 & 95 degrees

Heavy Duty Upholstery includes moldable stiffeners and is easily cleaned

Offset Arms provide additional width

Seat depth adjustable for growth

Storage Basket

Front rigging: Swingaway, Flip-Up Adjusts in the following areas: extension, fore & aft, angle & lateral

The LIGHTNING is crafted with 7000 Series Aluminum which is used for aircraft structural members because of its superb strength to weight properties



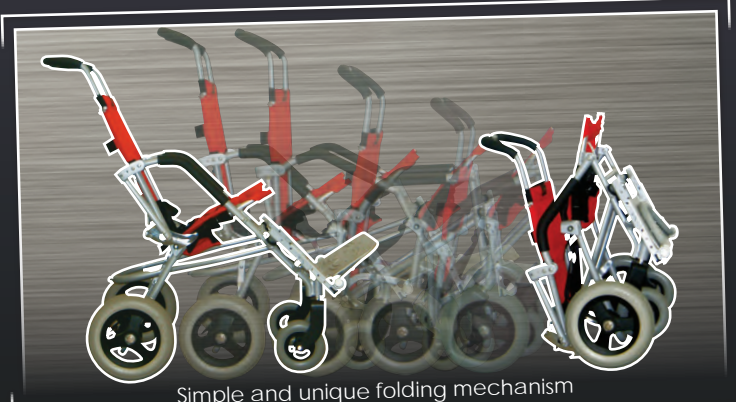
Push Handle (for pushing & control of chair)

Locking Strap secures base while being carried

Folding Actuator (operates both sides with single actuation)

Convenient Carrying Handle

Wheel Locks (operates both sides with single actuation)



Simple and unique folding mechanism

# Standard Specifications

**Lightning**

## Lightning Crash Test

**Transportation:** The Lightning meets the requirements specified in 5.3 of section 19 of Ansi/Resna WC/Vol. 1 prior to May 2002.

**Point of Impact:** The Lightning is so tough, it exhibits virtually no distortion at point of impact.



Devon, in her Red Glow Lightning, is posing with her sister Chloe.  
RTS-Mala Aaronson  
OTR/LCRTS



Tie Down

## Foot Positioning Options

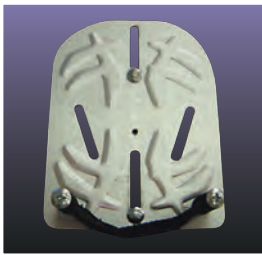
Front Rigging/Footplate Specifications (Standard)



The positioning footrests will easily adjust in 1" increments. The riggings remove easily and the Positioning Pin is tethered to prevent loss.



Footplate incorporates 50° of adjustable angle for dorsa and plantar flexion, and adjusts laterally over a 2" range.



Also incorporates fore and aft adjustment over a 1.5" range.

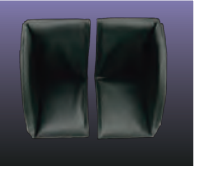
## Unique Configurations



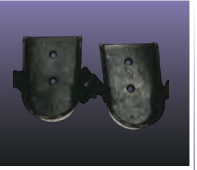
Headrests may now be added to the Lightning



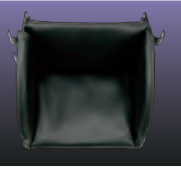
**FL-SLP**  
Single Footboard Platform  
(Specify size)



**Single Leg Foot Boxes:**  
**SPFB-SLS** Small  
**SPFB-SLM** Medium  
**SPFB-SLL** Large  
**SPFB-SLC** Custom  
(Specify size)



**Foot Supports:**  
**SPFS-S** Small  
**SPFS-M** Medium  
**SPFS-L** Large  
**SPFS-XL** Extra Large



**Double Leg Foot Boxes:**  
**SPFB-DLS** Small  
**SPFB-DLM** Medium  
**SPFB-DLL** Large  
**SPFB-DLC** Custom  
(Specify size)

**CALL TODAY FOR MORE INFORMATION!**

# Technical Specifications

**Lightning**

Specifications	11" Model	14" Model	16" Model
SEAT WIDTH / OUTSIDE CANES	12.75"	15.75"	16.75"
SEAT WIDTH / BETWEEN CANES	11"	14"	16"
OVERALL HEIGHT	36"	36"	38"
PUSH HANDLE HEIGHT			
OVERALL LENGTH w/ FOOTPLATE	38"	42"	44"
OVERALL LENGTH w/o FOOTPLATE	31"	35"	37"
LENGTH WHEEL TO WHEEL (maximum)	27"	27"	27"
SEAT TO FLOOR	20"@11" depth	21"@14" depth	22"
OVERALL WIDTH	19.5"	24"	25"
SEAT ANGLE (DUMP)	30°	30°	30°
BACK UPHOLSTERY	19.25"	24"	24.75"
SEAT TO FOOTREST *	1" to 12"	1" to 17"	1" to 17"
BACK ANGLE SETTINGS	85°, 90° & 95°	85°, 90° & 95°	85°, 90° & 95°
FOLDED DIMENSIONS	19.25"W x 19.25"D x 25.5"H	24"W x 19.25"D x 27.5"H	25"W x 16"D x 28"H
WEIGHT OF CHAIR (without riggings)	25 lbs	27 lbs	28 lbs
WEIGHT CAPACITY	75 lbs	100 lbs	150 lbs
FRAME COLOR CHOICES	SILVER	SILVER	SILVER
UPHOLSTERY COLOR CHOICES	NAVY BLUE • RED GLOW	NAVY BLUE • RED GLOW	NAVY BLUE • RED GLOW
FRONT WHEELS	6"	6"	6"
REAR WHEELS	10"	10"	10"
HEADREST EXTENSION	ADDS 6" OF HEIGHT	ADDS 6" OF HEIGHT	ADDS 6" OF HEIGHT
WIDTH OF BACK SEAT (tube to tube)	11" (outside - 12.75")	14" (outside - 15.5")	15" (outside - 16.75")
SEAT TO TOP OF BACK	20.25" (upholstery) 25" to handle	24" (upholstery) 25" to handle	25" (upholstery) 28" to handle
FOOTPLATE	7.25" x 5.4375"	7.25" x 5.4375"	7.25" x 5.4375"
FOOTPLATE ADJUSTMENT (fore and aft)	2"	2"	2"
FOOTPLATE MOUNTS (outside width)	15.75"	16"	17"
WIDTH BETWEEN ARMRESTS	13.5"	16.25"	17.5"
SEAT DEPTH	10" to 12"	12" to 14"	16" to 18"
TUBING	7/8"	7/8"	7/8"
OVERALL LENGTH W/O RIGGINGS	26.5"	29.5"	34"

\*(Standard extension range in 1" increments) • Note: The Lightning has been crash tested



## Optional Accessories Included in Special Edition (SE) Model

LT-HR Headrest Pad*	LT-HRE Headrest Extension*	LT-BC Canopy / Includes Headrest Extension*	LT-BSE Adjustable Single Flap Lateral Support with Scoli Strap*	LT-BHC Soft Covers for H Harness	LT-BAC Heel Loop/Ankle Cuffs	LT-DE Adjustable double flap lateral support with scoli pad
LT-EK 2" Seat Depth Extension Kit**	LT-RK 2" Seat Depth Reduction Kit*	LT-WI Work-N-Play Tray*	LT-TD Transportation Tie-Down Kit	Contoured Seat Cushion	Neoprene Back Cover	Adjustable Push Handle

(\*) Specify Size, Color or both • (\*\*) Not available for 16"

# Standard Specifications

**SPRITE**

## See Seating Section for Stealth's Full Seating Line



The **SPRITE** incorporates the proven Lightning frame while accommodating Stealth's Lightweight TWB Seats and Backs, or Stealth's NEW Full Seating System line. Headrests, Laterals, Hip Guides, and Pommels can all be added to the SPRITE for a complete positioning Mobility Base. Beauty, function, quality and portability come standard with the **SPRITE**.

**TWB Lightweight Seats & Backs** are available for the Sprite 11", 14" & 16" base widths. In Full or I-Back configurations and in custom Back Heights.

### What Makes the TWB Seats & Backs Lightweight, Durable & Comfortable?

A resilient foam layer is laminated over a durable closed cell layer to prevent a bottom-out effect on the shell. Also, a waterproof liner will be applied around the seat foam. The back foam is attached to the shell with Velcro to provide easy access for modifications.

For additional durability and comfort, both Neoprene and Vinyl covers are available. All covers include zippers for convenient removal.

The **SPRITE** utilizes the proven **Lightning** frame

Adjustable Handle Available



## Foot Positioning Options

Front Rigging/Footplate Specifications (Standard)



The positioning footrests will easily adjust in 1" increments. The riggings remove easily and the Positioning Pin is tethered to prevent loss.



Footplate incorporates 50° of adjustable angle for dorsa and plantar flexion, and adjusts laterally over a 2" range.



Also incorporates fore and aft adjustment over a 1.5" range.



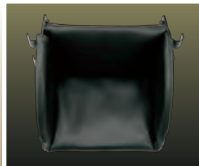
**FL-SLP**  
Single Footboard Platform  
(Specify size)



**Single Leg Foot Boxes:**  
**SPFB-SLS** Small  
**SPFB-SLM** Medium  
**SPFB-SLL** Large  
**SPFB-SLC** Custom  
(Specify size)



**Foot Supports:**  
**SPFS-S** Small  
**SPFS-M** Medium  
**SPFS-L** Large  
**SPFS-XL** Extra Large



**Double Leg Foot Boxes:**  
**SPFB-DLS** Small  
**SPFB-DLM** Medium  
**SPFB-DLL** Large  
**SPFB-DLC** Custom  
(Specify size)



- A. Adjustable seat angle 5, 10 and 15 degrees
- B. Folding Actuator
- C. Storage Basket

7/8" Back canes accommodate most aftermarket backs including Stealth lightweight backs. Shown above with back-attaching hardware.



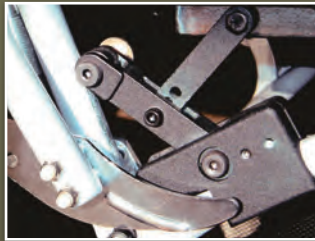
Simple and unique folding mechanism

**CALL TODAY FOR MORE INFORMATION!**

# Standard Specifications

**SPRITE**

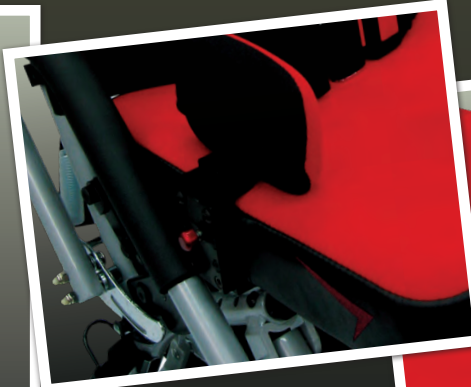
## Sprite Seat & Back Positioning Components



**FEATURES:** The Settable Seat Angle (SSA) allows you to set the angle at 5, 10 or 15 degrees (approximately) (patent pending) Simple to use and easily accessible Back Angle-Adjusters. (SP-MAH/SP-IMAH Series)

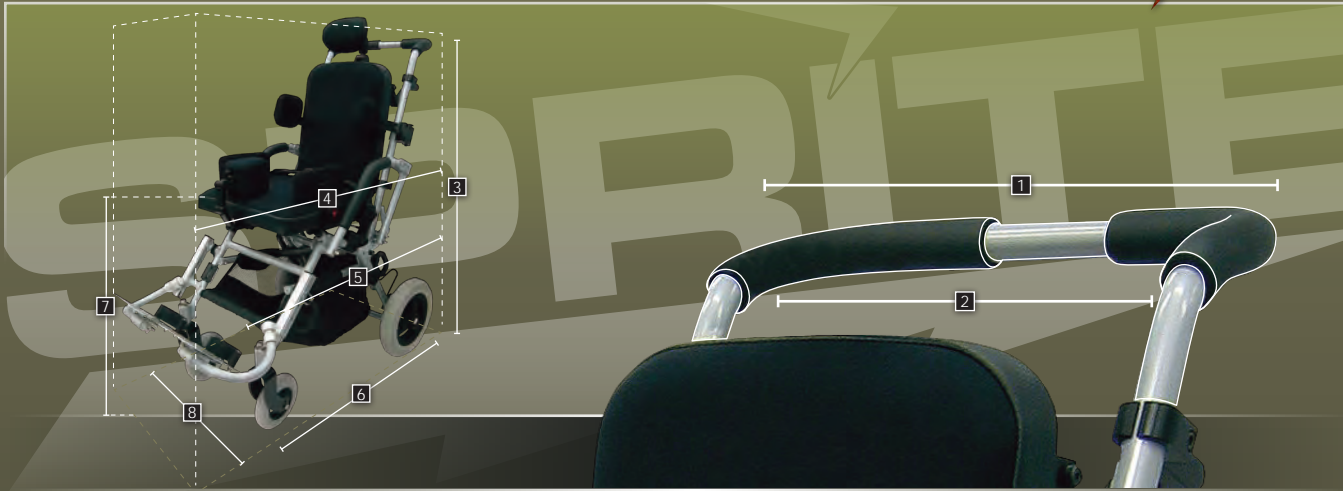
Refer to Seating Section for additional options and Specifications

## Additional Ideas



Call Today to Upgrade!  
**1.800.965.9229**

# Technical Specifications

Specifications	11" Model	14" Model	16" Model
SEAT WIDTH / OUTSIDE CANES	12.75"	15.75"	16.75"
SEAT WIDTH / BETWEEN CANES	11"	14"	16"
OVERALL HEIGHT PUSH HANDLE HEIGHT	36"	36"	38"
OVERALL LENGTH w/ FOOTPLATE	38"	42"	44"
OVERALL LENGTH w/o FOOTPLATE	31"	35"	37"
LENGTH WHEEL TO WHEEL (maximum)	27"	27"	27"
SEAT TO FLOOR	20"@11" depth	21"@14" depth	22"
OVERALL WIDTH	19.5"	24"	25"
SEAT ANGLE (DUMP)	30°	30°	30°
BACK HEIGHT	Please specify back height	Please specify back height	Please specify back height
SEAT TO FOOTREST *	1" to 12"	1" to 17"	1" to 17"
BACK ANGLE SETTINGS	85°, 90° & 95°	85°, 90° & 95°	85°, 90° & 95°
FOLDED DIMENSIONS	19.25"W x 19.25"D x 25.5"H	24"W x 19.25"D x 27.5"H	25"W x 16"D x 28"H
WEIGHT OF CHAIR (without riggings)	25 lbs	27 lbs	28 lbs
WEIGHT CAPACITY	75 lbs	100 lbs	150 lbs
FRAME COLOR CHOICES	SILVER	SILVER	SILVER
UPHOLSTERY COLOR CHOICES	SEE SEATING SECTION FOR COLOR CHOICES	SEE SEATING SECTION FOR COLOR CHOICES	SEE SEATING SECTION FOR COLOR CHOICES
FRONT WHEELS	6"	6"	6"
REAR WHEELS	10"	10"	10"
WIDTH OF BACK SEAT (tube to tube)	11" (outside - 12.75")	14" (outside - 15.5")	15" (outside - 16.75")
SEAT TO TOP OF BACK	20.25" (upholstery) 25" to handle	24" (upholstery) 25" to handle	25" (upholstery) 28" to handle
FOOTPLATE	7.25" x 5.4375"	7.25" x 5.4375"	7.25" x 5.4375"
FOOTPLATE ADJUSTMENT (fore and aft)	2"	2"	2"
FOOTPLATE MOUNTS (outside width)	15.75"	16"	17"
WIDTH BETWEEN ARMRESTS	13.5"	16.25"	17.5"
SEAT DEPTH	Please specify seat depth	Please specify seat depth	Please specify seat depth
TUBING	7/8"	7/8"	7/8"
OVERALL LENGTH W/O RIGGINGS	26.5"	29.5"	34"

\*(Standard extension range in 1" increments) • Note: The Sprite has been crash tested